



700/705/710 Vehicle Mounted Brake Lathe & Rotor Driving Unit

PANZITTA SALES & SERVICE
72 George Avenue
Wilkes-Barre, PA 18705
570-822-6720 800-822-6720
www.panzittasales.com



Parts Identification

READ these instructions before placing unit in service. KEEP these and other materials delivered with the unit in a binder near the machine for ease of reference by supervisors and operators.

HENNESSY INDUSTRIES, INC.

1601 J. P. Hennessy Drive, LaVergne, TN USA 37086-3565 615/641-7533 800/688-6359

HENNESSY INDUSTRIES INC. Manufacturer of AMMCO®, COATS® and BADA® Automotive Service Equipment and Tools.

Manual Part No.: 940943 00

Revision: 06/01

Parts Identification

Table of Contents

| | |
|------------------------------------|-------|
| Electrical Schematic 115 VAC | 3 |
| Mounting Hardware #927581 | 3 |
| Lathe Assembly | 4 - 5 |
| Rotor Driving Unit | 6 |
| Electrical Schematic 115 VAC | 7 |

PANZITTA SALES & SERVICE

72 George Avenue

Wilkes-Barre, PA 18705

570-822-6720 800-822-6720

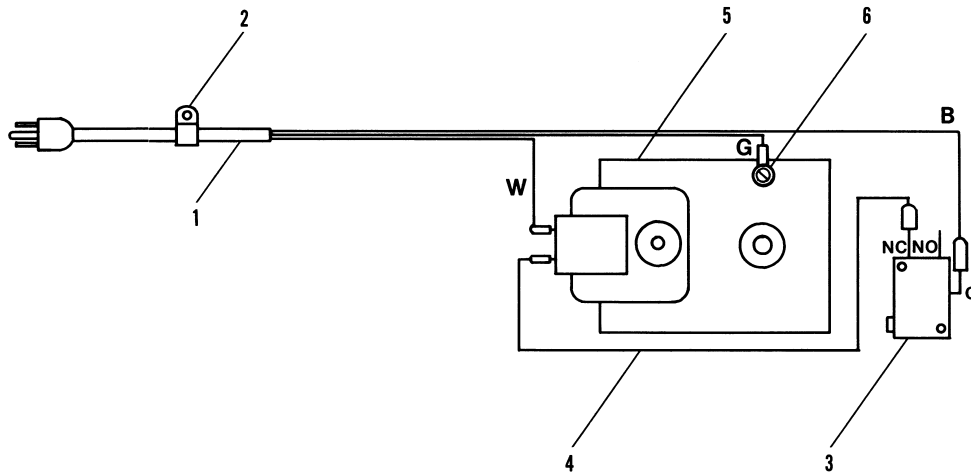
www.panzittasales.com

Parts Identification

The following pages include full parts breakdowns with exploded view illustrations to help with ordering replacement or spare parts. Assemblies are noted where it is recommended that individual parts not be ordered separately. These parts are available only as assemblies because some parts are staked, pinned, or press fitted, then drilled, machined, or bored. Close tolerances must be maintained in assembly. Every effort is made to supply accurate exploded views, however, due to interim changes in manufacturing operations, some units may not be exactly as illustrated.

Parts Identification

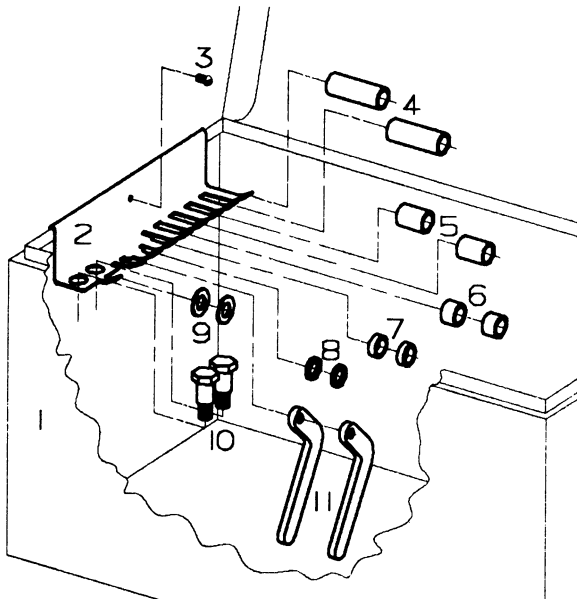
Electrical Schematic 115 VAC



| ITEM | PART NO. | QTY | DESCRIPTION |
|------|----------|-----|---------------|
| 1 | 926539 | 1 | Cord Set |
| 2 | 925873 | 1 | Cord Grip |
| 3 | 927107 | 1 | Switch, Micro |
| 4 | 927114 | 1 | Wire, Jumper |
| 5 | 926530 | 1 | Motor |
| 6 | 925789 | 1 | Screw, Ground |

PANZITTA SALES & SERVICE
72 George Avenue
Wilkes-Barre, PA 18705
570-822-6720 800-822-6720
www.panzittasales.com

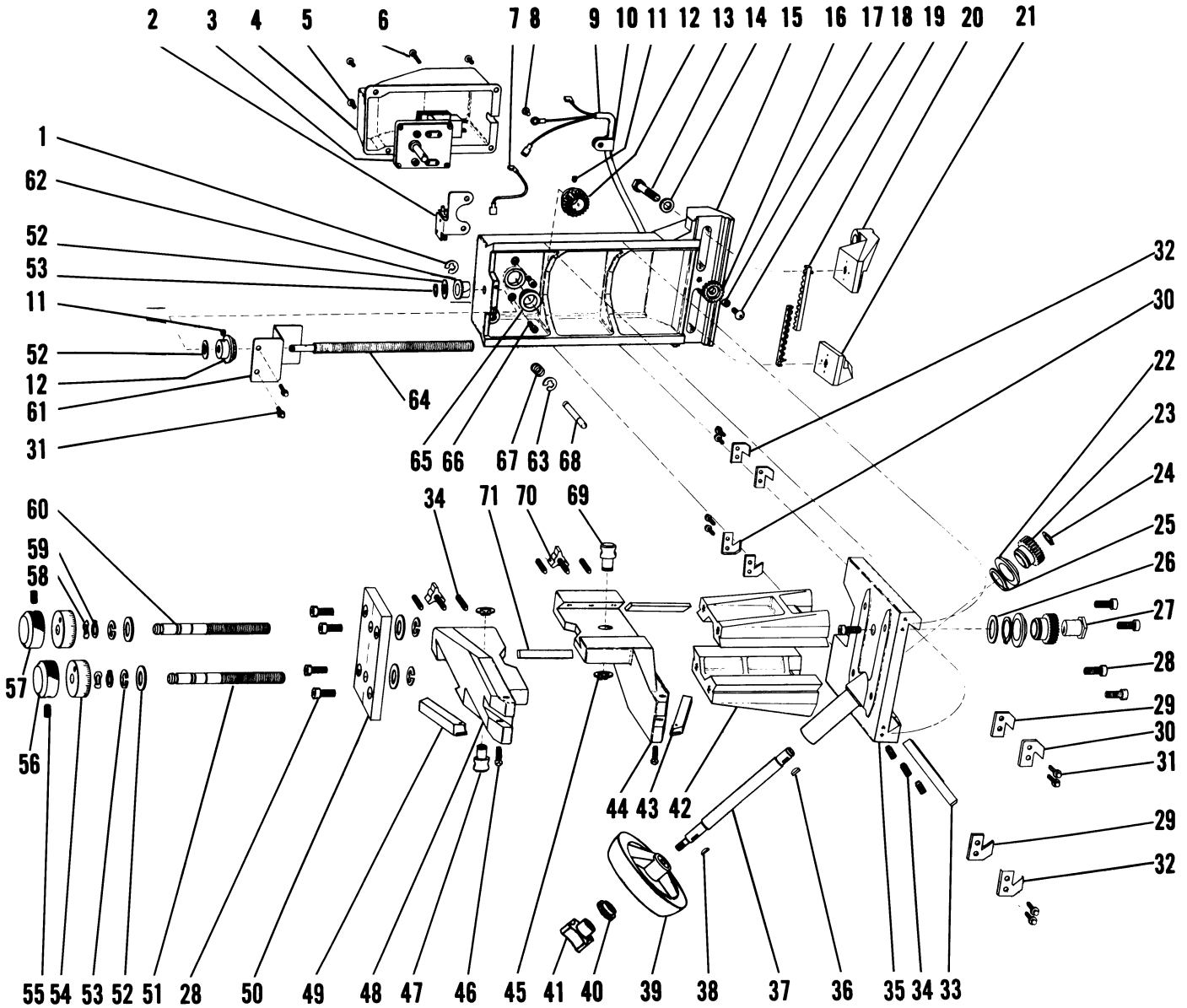
Mounting Hardware #927581



| ITEM | PART NO. | QTY | DESCRIPTION |
|------|-----------|-----|-------------------|
| 1 | 927174 | 1 | Chest, Storage |
| 2 | 927579 | 1 | Rack, Storage |
| 3 | 928220 | 1 | Screw, Round Head |
| 4 | 927089-05 | 2 | Spacer, 2" |
| 5 | 927089-04 | 2 | Spacer, 1" |
| 6 | 927089-03 | 2 | Spacer, 1/2" |
| 7 | 927089-02 | 2 | Spacer, 1/4" |
| 8 | 927089-01 | 2 | Spacer, 1/8" |
| 9 | 927212 | 2 | Washer, Flat |
| 10 | 927086-03 | 2 | Bolt, Mounting |
| 11 | 927580 | 2 | Plate, Nut |
| 12 | 929517 | 2 | Spacer |
| 13 | 927077 | 1 | Wrench |

Parts Identification

Lathe Assembly



PANZITTA SALES & SERVICE
72 George Avenue
Wilkes-Barre, PA 18705
570-822-6720 800-822-6720
www.panzittasales.com

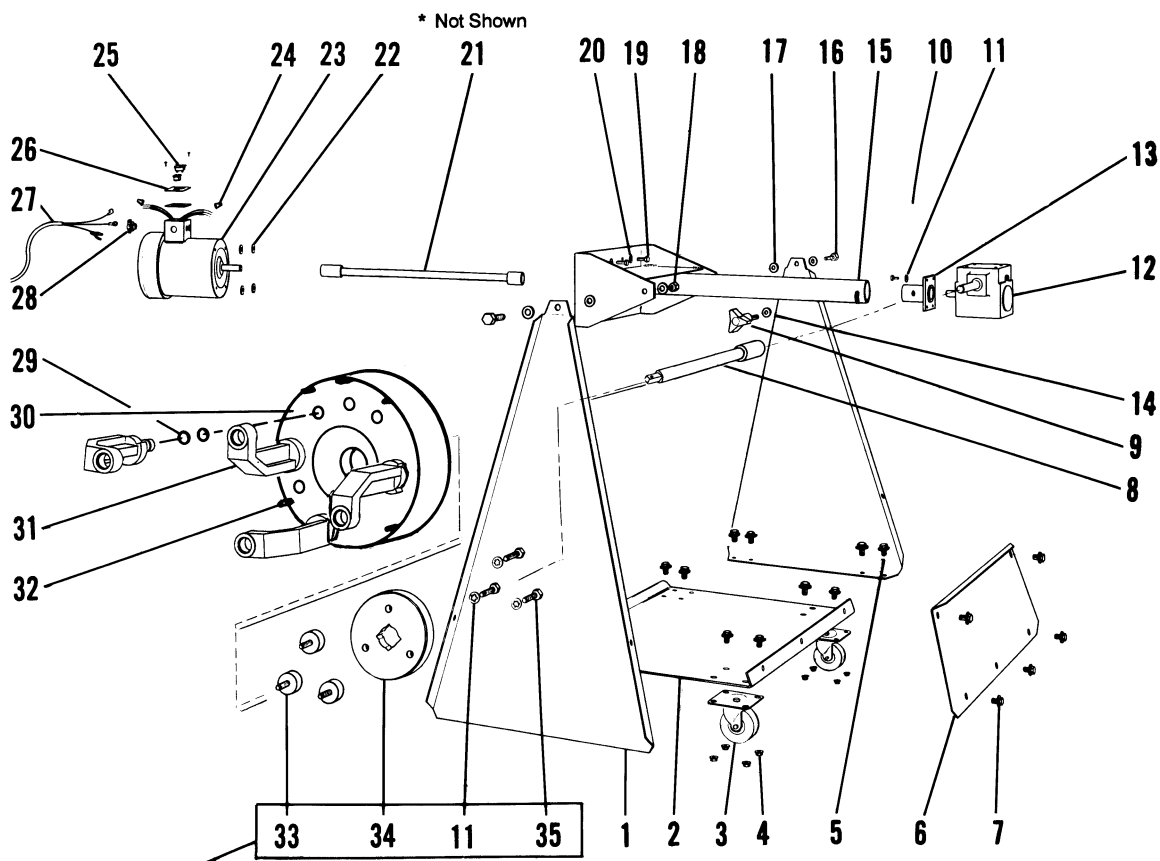
Parts Identification

| ITEM | PART NO. | QTY | DESCRIPTION | ITEM | PART NO. | QTY | DESCRIPTION |
|------|----------|-----|--------------------------|------|-----------|-----|--------------------|
| 1 | 927283 | 1 | Ring, Retaining | 37 | 926515 | 1 | Shaft, Feed |
| 2 | 927072 | 1 | Switch Assembly | 38 | 906971 | 1 | Key |
| 3 | 926530 | 1 | Motor, 4 RPM | 39 | 925765 | 1 | Handwheel |
| 4 | 926534 | 1 | Cover, Motor | 40 | 925807 | 1 | Washer, Handwheel |
| 5 | 924759 | 3 | Screw, Motor Cover | 41 | 925837 | 1 | Knob |
| 6 | 927071 | 1 | Screw, Motor Cover | 42 | 926505 | 2 | Support |
| 7 | 927114 | 1 | Wire, Jumper | 43 | 927118 | 1 | Tool Bit Assy., RH |
| 8 | 925789 | 1 | Screw, Ground | 44 | 926506-RD | 1 | Holder, Tool-Red |
| 9 | 926539 | 1 | Cord, Line | 45 | 903320 | 2 | Ring, Retaining |
| 10 | 925873 | 1 | Grip, Cord | 46 | 927076 | 2 | Screw, Square Head |
| 11 | 903098 | 2 | Screw, Set | 47 | 926527 | 1 | Coupler, LH |
| 12 | 926528 | 2 | Gear, Miter | 48 | 926506-BL | 1 | Holder, Tool-Blue |
| 13 | 926541 | 2 | Screw, Hex Head | 49 | 927119 | 1 | Tool Bit Assy., LH |
| 14 | 927129 | 2 | Washer | 50 | 926507 | 1 | Plate, End |
| 15 | 926531 | 1 | Mainframe | 51 | 926526 | 1 | Screw, Lead. LH |
| 16 | 926509 | 1 | Pinion | 52 | 927126 | 6 | Washer, Thrust |
| 17 | 926523 | 1 | Sleeve | 53 | 902304 | 5 | Ring, Retaining |
| 18 | 920433 | 1 | Screw, Button Head | 54 | 926521 | 2 | Micrometer, Dial |
| 19 | 926536 | 2 | Gear Rack Assembly | 55 | 900378 | 2 | Screw, Set |
| 20 | 926532 | 1 | Bracket, Mounting-Top | 56 | 926520-BL | 1 | Dial, Blue |
| 21 | 926533 | 1 | Bracket, Mounting-Bottom | 57 | 926520-RD | 1 | Dial, Red |
| 22 | 925856 | 2 | Retainer, Gear | 58 | 926522 | 2 | Washer, Wave |
| 23 | 925804 | 2 | Gear | 59 | 905613 | 2 | Ring, Retaining |
| 24 | 925857 | 1 | Ring, Retaining | 60 | 926524 | 1 | Screw, Lead-RH |
| 25 | 903174 | 2 | Ring, Retaining | 61 | 927124 | 1 | Guard |
| 26 | 906872 | 1 | Washer, Thrust | 62 | 922331 | 1 | Bearing, Nylinder |
| 27 | 926529 | 1 | Shaft, Stub | 63 | 927112 | 2 | Ring, Retaining |
| 28 | 926548 | 9 | Screw, SHCS | 64 | 926516 | 1 | Screw, Lead |
| 29 | 926538 | 4 | Wiper | 65 | 926518 | 1 | Bearing, Flanged |
| 30 | 926543 | 2 | Shield, Right | 66 | 927128 | 2 | Screw, Motor |
| 31 | 927110 | 10 | Screw, Cover | 67 | 927111 | 1 | Spring |
| 32 | 926542 | 2 | Shield, Left | 68 | 927109 | 1 | Actuator |
| 33 | 926511 | 1 | Gib, Carriage | 69 | 926525 | 1 | Coupler, RH |
| 34 | 926546 | 7 | Screw, Set | 70 | 926544 | 2 | Knob, Tool Holder |
| 35 | 926535 | 1 | Carriage Assembly | 71 | 926510 | 2 | Gib, Tool Holder |
| 36 | 906972 | 1 | Key | | | | |

PANZITTA SALES & SERVICE
72 George Avenue
Wilkes-Barre, PA 18705
570-822-6720 800-822-6720
www.panzittasales.com

Parts Identification

Rotor Driving Unit



May or may not be included in your model.

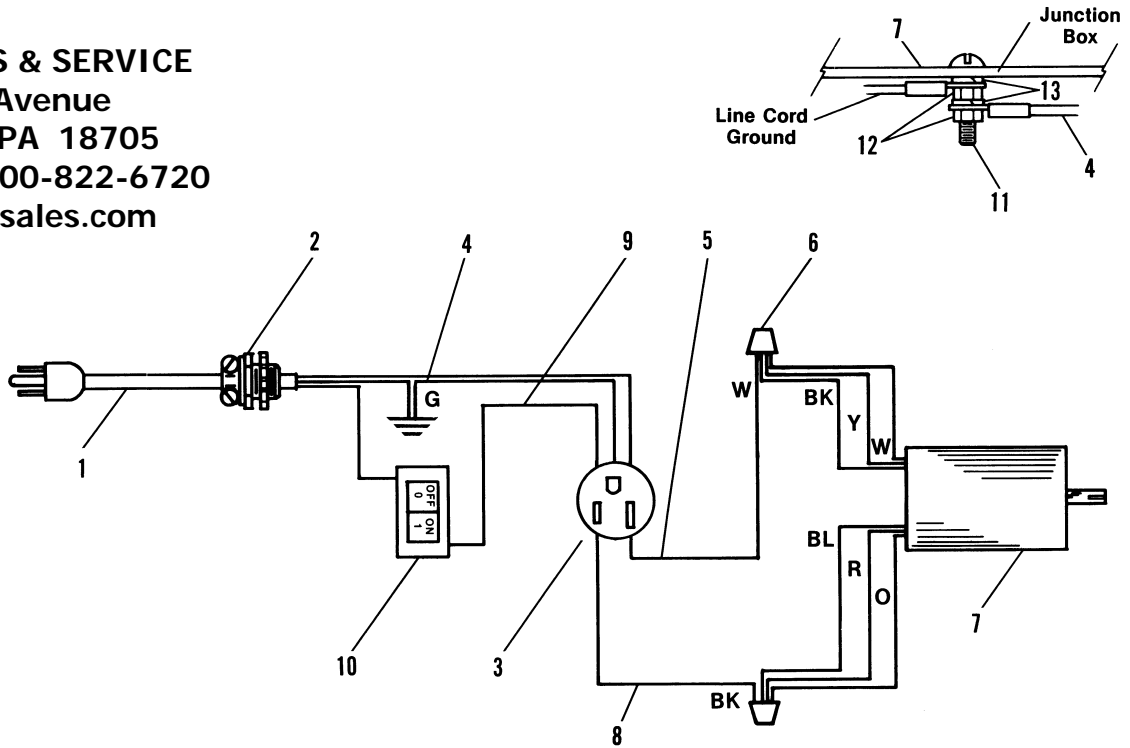
| ITEM | PART NO. | QTY | DESCRIPTION | ITEM | PART NO. | QTY | DESCRIPTION |
|------|----------|-----|----------------------------------|------|----------|-----|---|
| 1 | 927062 | 2 | Upright | * | 927978 | | Replacement Cooling Fan - for item #23 |
| 2 | 927061 | 1 | Base | * | 927977 | | Replacement Fan Cover - for item #23 |
| 3 | 927166 | 4 | Caster | 24 | 27258 | 2 | Nut, Wire |
| 4 | 8182178 | 16 | Locknut, 5/16-18 | 25 | 27164 | 1 | Breaker, Circuit |
| 5 | 8120325 | 16 | Screw, 5/16-18 x 1 Wiz Lock | 26 | 27078 | 1 | Plate, Cover |
| 6 | 927085 | 1 | Panel, Front | 27 | 27179 | 1 | Cord, Line |
| 7 | 927183 | 5 | Screw, 3/8-16 x 1/2 Self-Tapping | 28 | 25783 | 1 | Connector |
| 8 | 927173 | 1 | Drive Shaft Assembly, Output | 29 | 27584 | 8 | O-ring |
| 9 | 927185 | 1 | Knob | 30 | 27159 | 1 | Plate, Lug Adapter |
| 10 | 922630 | 4 | B.H.S.C.S. 1/4- 20 x 5/8 | 31 | 26622 | 4 | Leg, Ass. (w/O-rings) |
| 11 | 905592 | 7 | Lockwasher, 1/4 | 32 | 5562 | 8 | Pin, Roll |
| 12 | 927083 | 1 | Reducer, Gear | 33 | 20780 | 3 | Mount, Rubber |
| 13 | 927388 | 1 | Plate, Reducer Bracket | 34 | 27878 | 1 | Flange, 3/4" Drive |
| 14 | 920777 | 1 | Lockwasher, 5/16 | * | 27162 | | Flange, 1/2" Drive |
| 15 | 927423 | 1 | Weldment, Motor Bracket | 35 | 905544 | 3 | Screw, 1/4-20 x 3/4 Hex Head |
| 16 | 905568 | 2 | Screw, 3/8-16 x 3/4 Hex Head | * | 926649 | 1 | Tray, Chip |
| 17 | 927212 | 10 | Washer, 3/8 | * | 927585 | 1 | Guard, Switch |
| 18 | 927277 | 2 | Locknut, 3/8-16 | * | 927404 | 1 | Label, Warning (Do Not Use Below Garage Floor or Grade Level) |
| 19 | 906820 | 4 | Screw, 3/8-16 x 1 | * | 927366 | 1 | Label, Warning (Keep Hands and Clothing Away from Rotating Parts) |
| 20 | 921557 | 4 | Lockwasher, 3/8 | | | | |
| 21 | 927069 | 1 | Drive Shaft Assembly, Input | | | | |
| 22 | 927129 | 4 | Washer, 3/8 Thick | | | | |
| 23 | 927081 | 1 | Motor - 15/230 VAC, 60 Hz | | | | |

*Not Shown

Parts Identification

Electrical Schematic 115 VAC

PANZITTA SALES & SERVICE
 72 George Avenue
 Wilkes-Barre, PA 18705
 570-822-6720 800-822-6720
 www.panzittasales.com



| ITEM | PART NO. | QTY | DESCRIPTION |
|------|----------|-----|--------------------|
| 1 | 927179 | 1 | Cord, Line |
| 2 | 925783 | 1 | Connector |
| 3 | 906046 | 1 | Outlet |
| 4 | 927364 | 1 | Wire, Jumper |
| 5 | 927363 | 1 | Wire, Jumper |
| 6 | 927258 | 2 | Wire, Connector |
| 7 | 927081 | 1 | Motor |
| 8 | 927362 | 1 | Wire, Jumper |
| 9 | 927182 | 1 | Wire, Jumper |
| 10 | 927164 | 1 | Circuit Breaker |
| 11 | 927361 | 3 | Screw, #8-32 x 1/2 |
| 12 | 906492 | 2 | Nut, Hex #8-32 |
| 13 | 920545 | 2 | Lockwasher, #8 |

PANZITTA SALES & SERVICE
72 George Avenue
Wilkes-Barre, PA 18705
570-822-6720 800-822-6720
www.panzittasales.com