

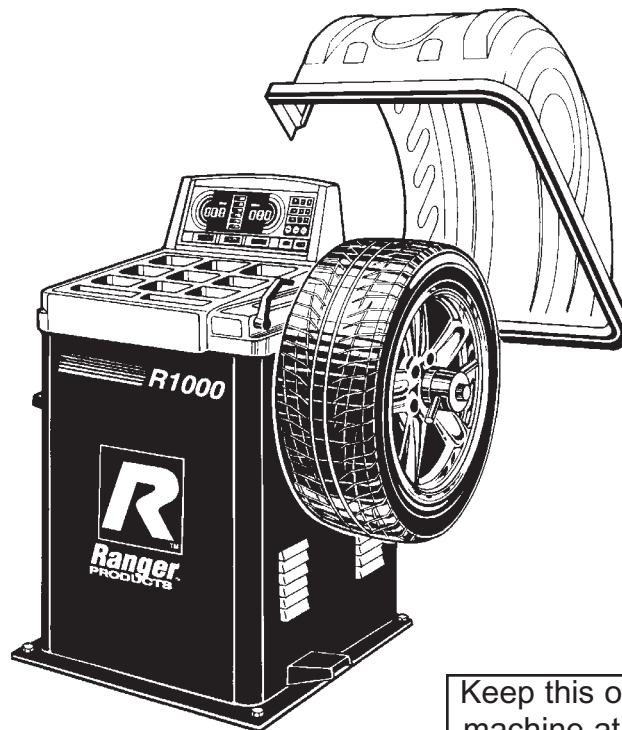


Forward this manual to all operators.
Failure to operate this equipment as
directed may cause injury.

INSTALLATION AND OPERATION MANUAL

COMPUTER
WHEEL
BALANCER

MODEL
R1000



Keep this operation manual near the machine at all times. Make sure that ALL USERS read this manual .

SHIPPING DAMAGE CLAIMS

When this equipment is shipped, title passes to the purchaser upon receipt from the carrier. Consequently, claims for the material damaged in shipment must be made by the purchaser against the transportation company at the time shipment is received.

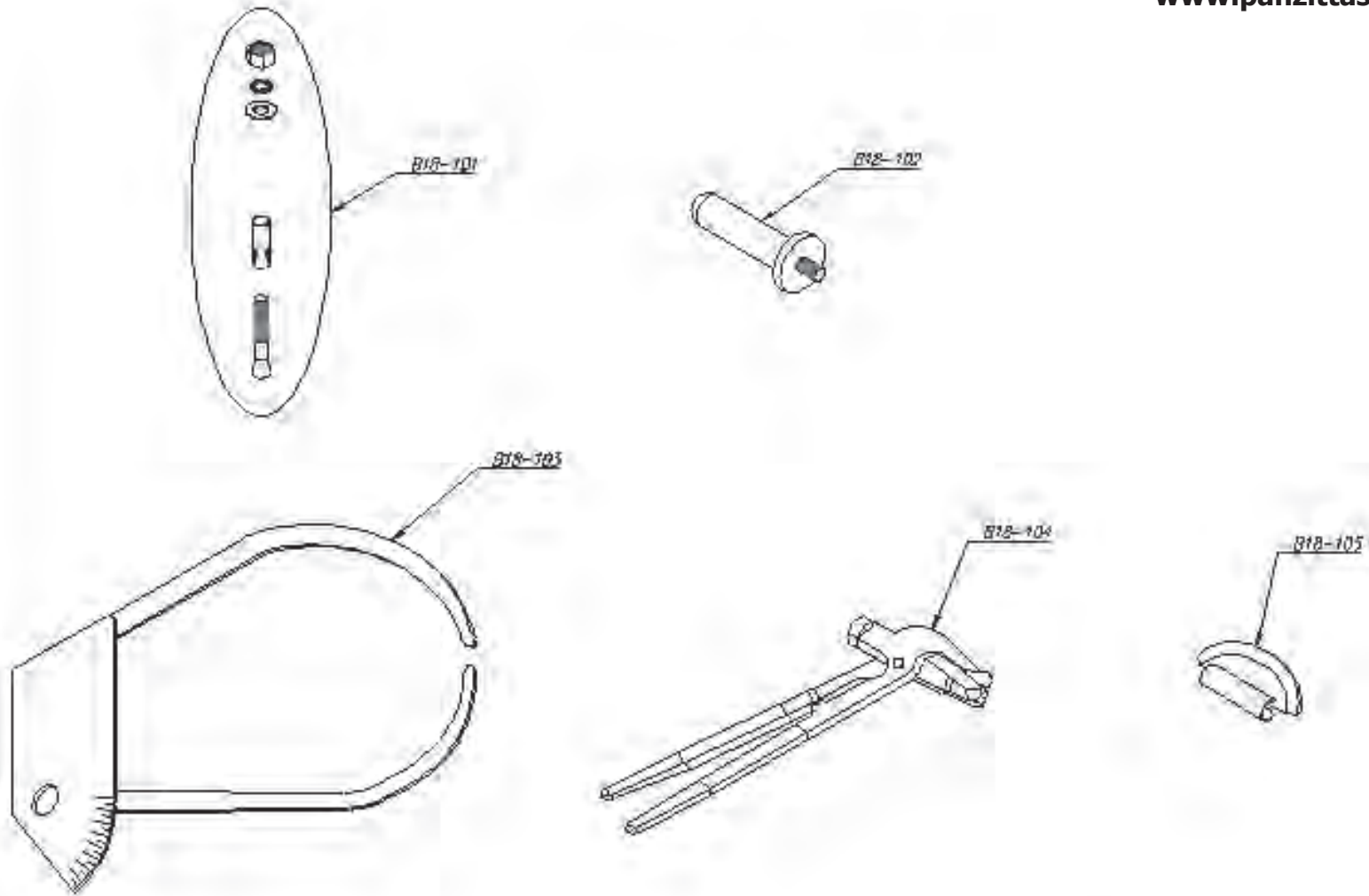
BE SAFE

Your new Ranger wheel balancer was designed and built with safety in mind. However, your overall safety can be increased by proper training and thoughtful operation on the part of the operator. DO NOT operate or repair this equipment without reading this manual and the important safety instructions shown inside.

MOST PARTS FOR THIS MACHINE ARE NO NO LONGER AVAILABLE.



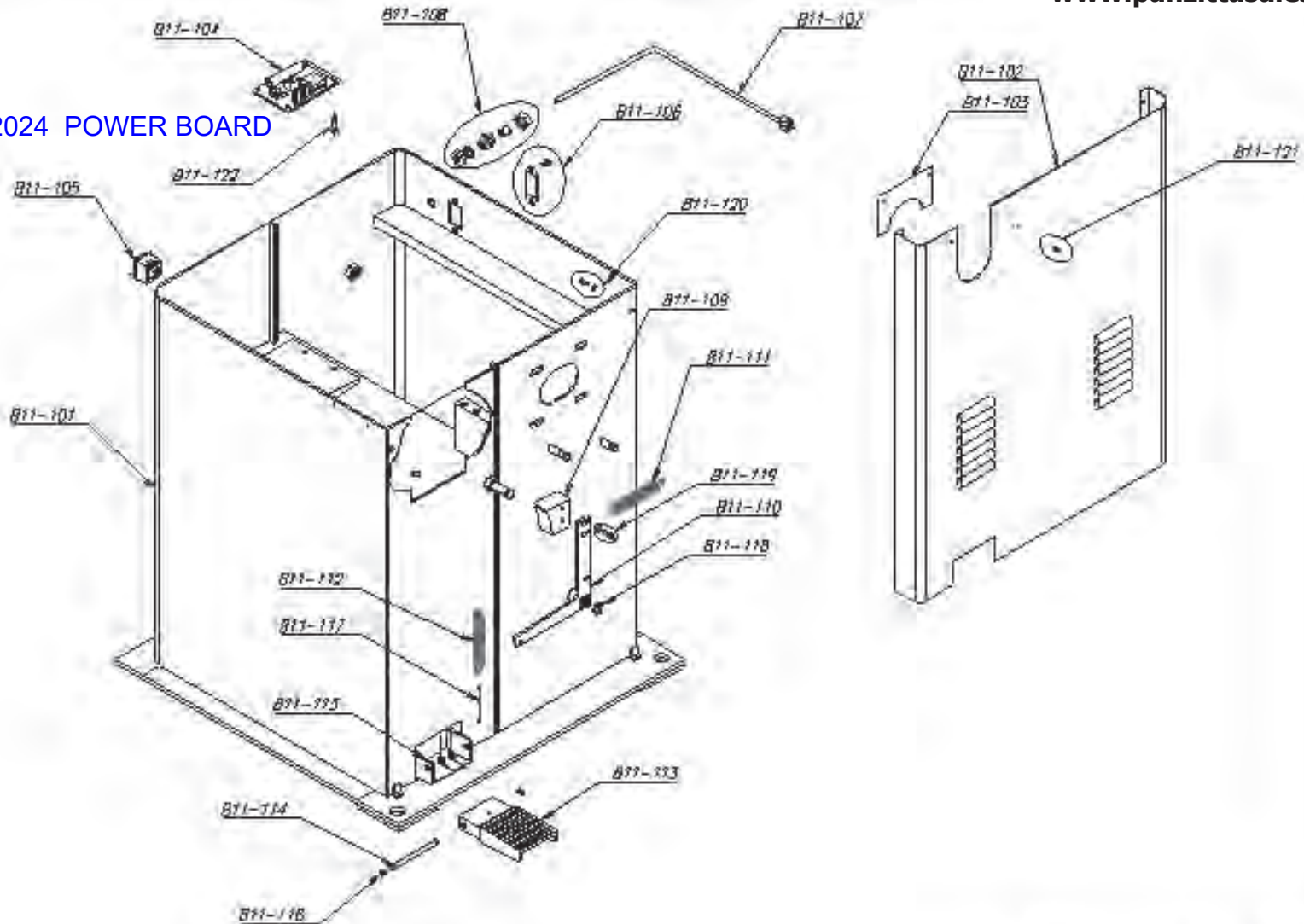
PANZITTA SALES & SERVICE
72 George Avenue
Wilkes-Barre, PA 18705
570-822-6720 800-822-6720
www.panzittasales.com



MOST PARTS FOR THIS MACHINE ARE NO NO LONGER AVAILABLE.

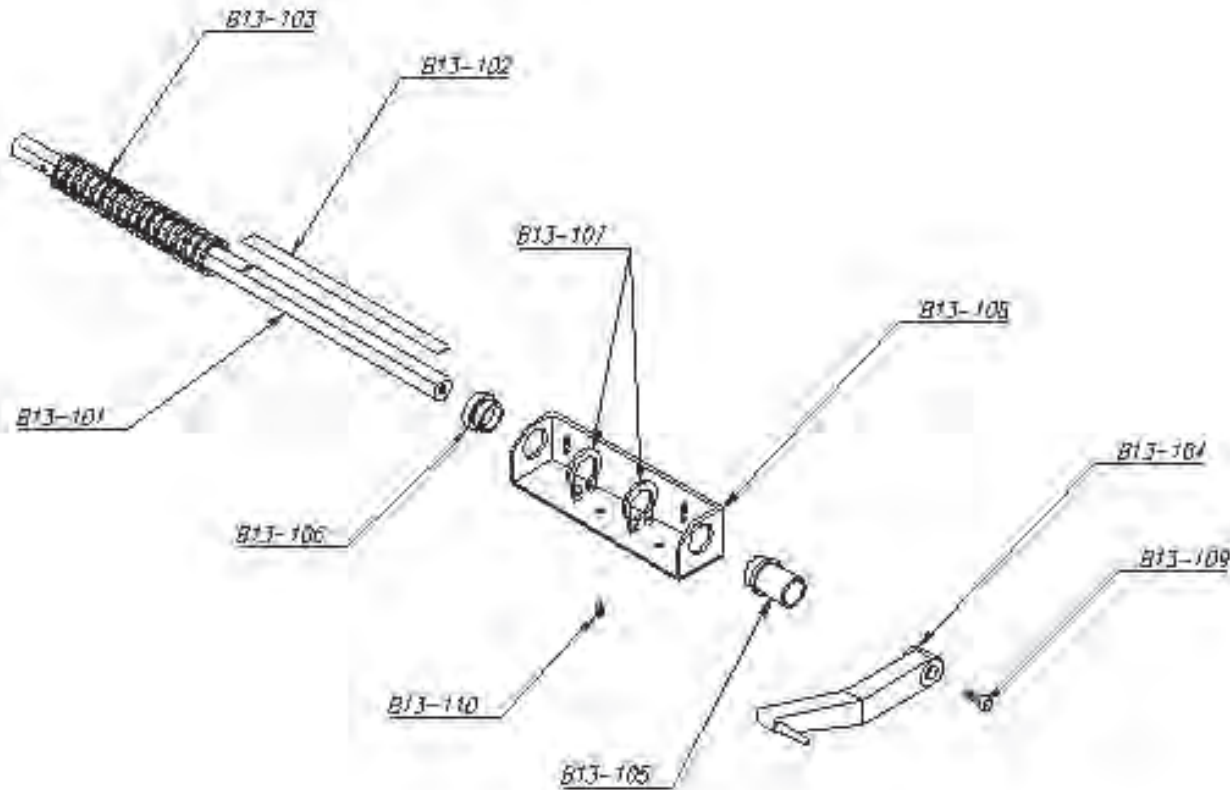
GROUP	PART NO
ACCESSORY	B18-100

B-P3182024 POWER BOARD



GROUP	PART NO.
BODY	B11-100

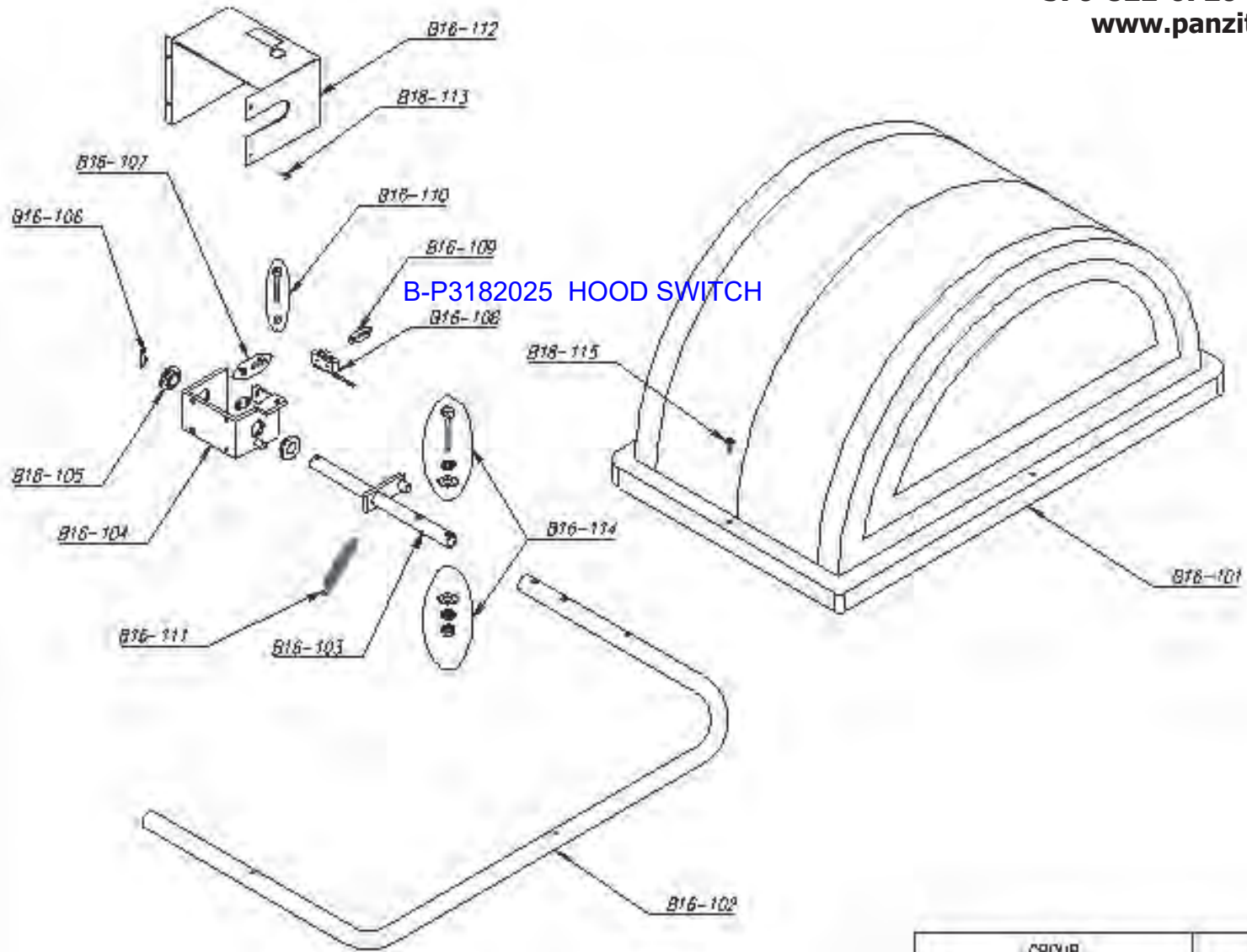
MOST PARTS FOR THIS MACHINE ARE NO NO LONGER AVAILABLE.



MOST PARTS FOR THIS MACHINE ARE NO NO LONGER AVAILABLE.

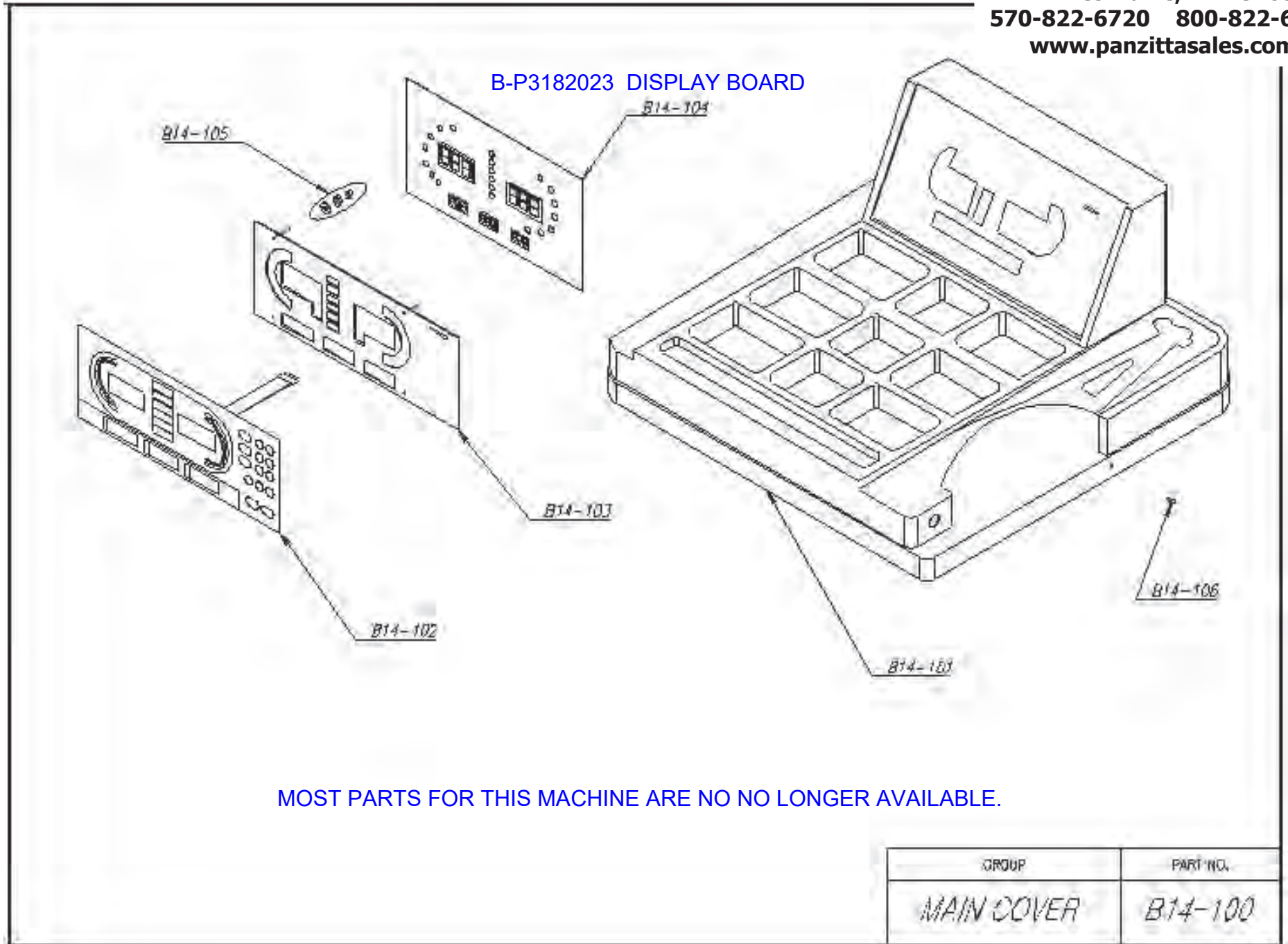
GROUP	PART NO
DISTANCER	B13-100

PANZITTA SALES & SERVICE
72 George Avenue
Wilkes-Barre, PA 18705
570-822-6720 800-822-6720
www.panzittasales.com



GROUP	PART NO.
HOOD	B16-100

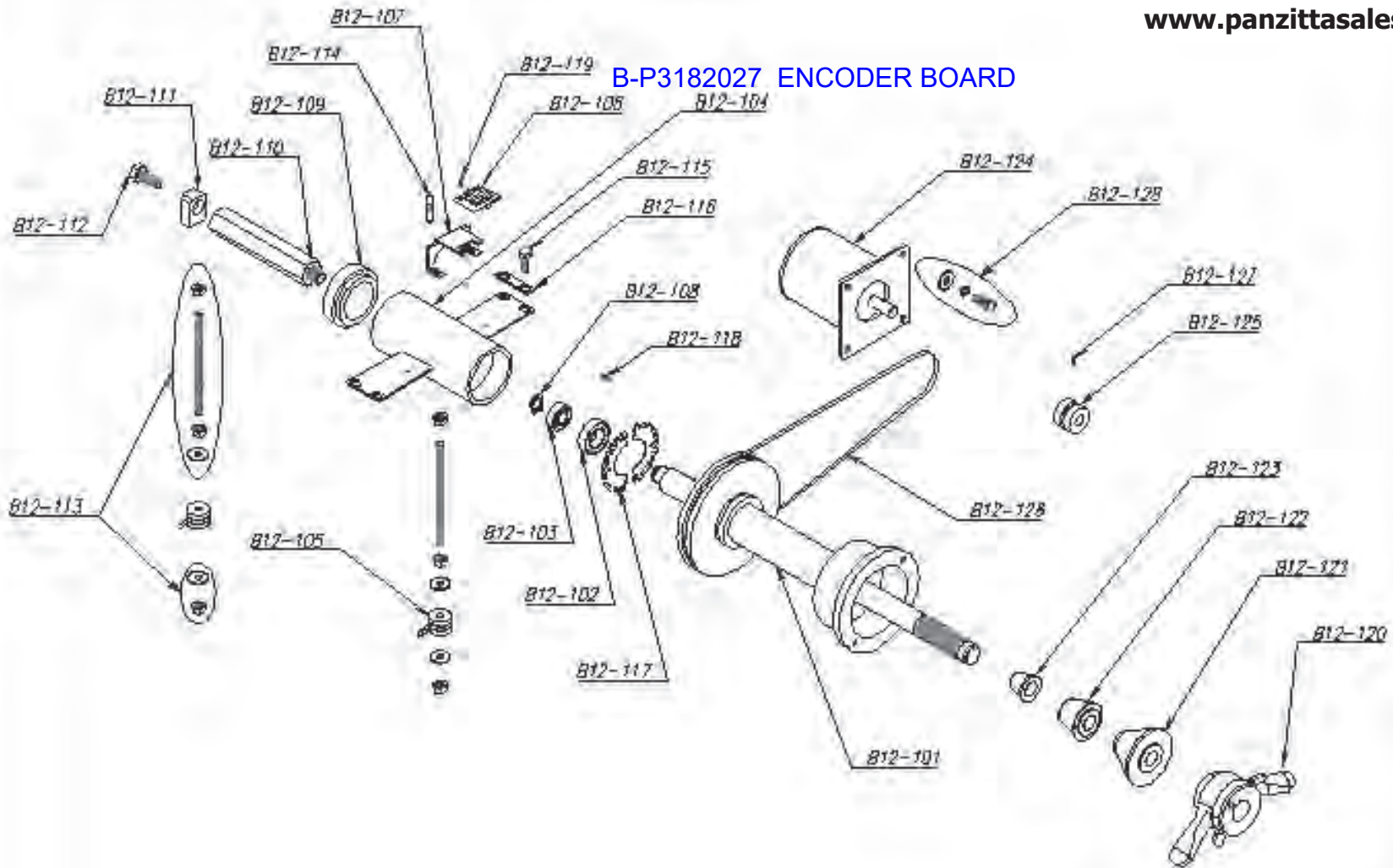
MOST PARTS FOR THIS MACHINE ARE NO NO LONGER AVAILABLE.



MOST PARTS FOR THIS MACHINE ARE NO NO LONGER AVAILABLE.

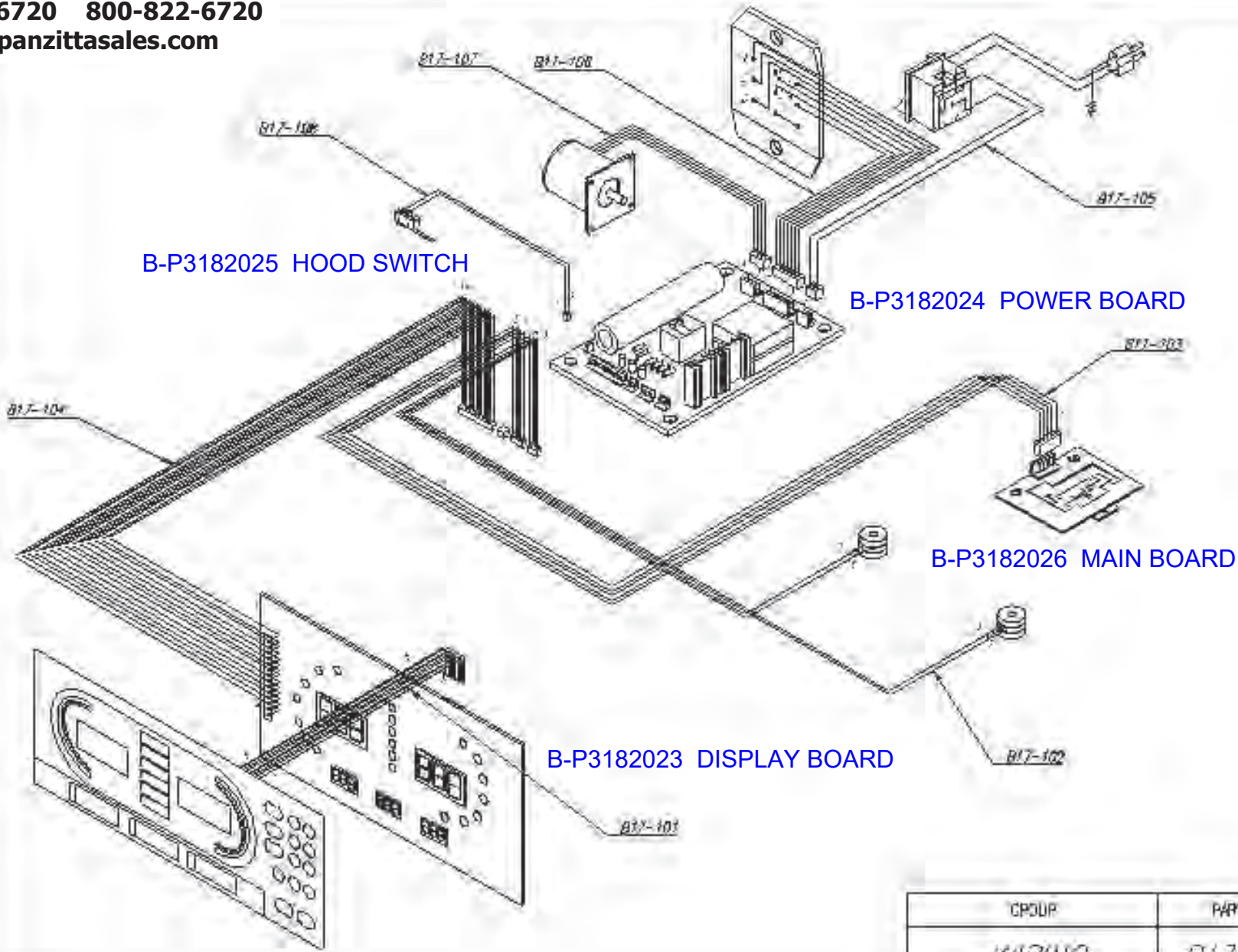
GROUP	PART NO.
MAIN COVER	B14-100

B-P318207 ENCODER BOARD



GROUP	PART NO.
SHAFT	B12-100

MOST PARTS FOR THIS MACHINE ARE NO NO LONGER AVAILABLE.



B-P318205 HOOD SWITCH

B-P318204 POWER BOARD

B-P318206 MAIN BOARD

B-P318203 DISPLAY BOARD

GROUP	PART NO.
WIRING	B17-100

MOST PARTS FOR THIS MACHINE ARE NO NO LONGER AVAILABLE.

Trouble Shooting Guide R1000

Err Code	Description	Method	
Err 4-1	Calibration Incorrect	1) Repeat Calibration 3) Check Encoder Cable 5) Change Main Board	2) Check Sensor Cable 4) Change Sensor Or Main Shaft 6) Change Power Board
Err 4-2	Measuring Value Was Over-Passed	1) Repeat Calibration 3) Check Encoder Cable 5) Change Main Board	2) Check Sensor Cable 4) Change Sensor Or Main Shaft 6) Change Power Board
Err 4-3	Wrong Data Saved	1) Turn Off And Turn On Again 2) Repeat Calibration 3) Change Main Board	
Err 4-4	Wrong Data Loaded	1) Turn Off And Turn On Again 2) Repeat Calibration 3) Change Main Board	
Err 4-5	Program Malfunction	Change Main Board	
Err 5-1	Sine Function Malfunction	Change Main Board	
Err 5-2	Cosine Function Malfunction	Change Main Board	
Err 5-3	Arcsine Function Malfunction	Change Main Board	
Err 5-4	Estimate Value Was Not Calculated	1) Re Measurement 3) Check Encoder Cable 5) Change Main Board	2) Check Sensor Cable 4) Check Sensor Or Main Shaft 6) Change Power Board
Err 5-5	Sensor Value Was Wrong	1) Turn Off And Turn On Again 3) Check Sensor Cable 5) Change Sensor Or Main Shaft 7) Change Power Board	2) Re-Work Calibration 4) Check Encoder Cable 6) Change Main Board
Err 6-1	Motor Power Is Too Low	1) Check Spindle Of Main Shaft 3) Check The Tire 5) Change Power Board	2) Check Spindle Of Motor 4) Change Motor 6) Change Main Board
Err 6-2	Rotation Without Wheel	Repeat After Installation Of Wheel	
Err 6-3	Speed Of Rotation Was Too Slow	1) Re Measure 3) Change Main Board	2) Check Encoder Cable
ERR 7-1	Not input the A Phase Signal on Encoder	1) Check Pulse Plate 3) Change Encoder Board 5) Change Power Board	2) Check Encoder Cable 4) Change Main Board
ERR 7-2	Not input the B Phase Signal on Encoder	1) Check Pulse Plate 3) Change Encoder Board 5) Change Power Board	2) Check Encoder Cable 4) Change Main Board
ERR 7-3	Not input the Z Phase Signal on Encoder	1) Check Pulse Plate 3) Change Encoder Board 5) Change Power Board	2) Check Encoder Cable 4) Change Main Board
ERR 7-4	Not input A and B Phase Signals on Encoder	1) Check Pulse Plate 3) Change Encoder Board 5) Change Power Board	2) Check Encoder Cable 4) Change Main Board

PANZITTA SALES & SERVICE
72 George Avenue
Wilkes-Barre, PA 18705
570-822-6720 800-822-6720
www.panzittasales.com

MOST PARTS FOR THIS MACHINE ARE NO NO LONGER AVAILABLE.

Trouble Shooting Guide R1000

ERR CODE	Contents	Method
ERR 8-1	Membrane Switch "A" K Key Short	1) Change Membrane Switch 2) Change Main Board
ERR 8-2	Membrane Switch "A" K Key Short	1) Change Membrane Switch 2) Change Main Board
ERR 8-3	Membrane Switch "B" K Key Short	1) Change Membrane Switch 2) Change Main Board
ERR 8-4	Membrane Switch "B" K Key Short	1) Change Membrane Switch 2) Change Main Board
ERR 8-5	Membrane Switch "C" K Key Short	1) Change Membrane Switch 2) Change Main Board
ERR 8-6	Membrane Switch "C" K Key Short	1) Change Membrane Switch 2) Change Main Board
ERR 8-7	Membrane Switch "CUT" Key Short	1) Change Membrane Switch 2) Change Main Board
ERR 8-8	Membrane Switch "FUN" Key Short	1) Change Membrane Switch 2) Change Main Board
ERR 8-9	Membrane Switch "CAL" Key Short	1) Change Membrane Switch 2) Change Main Board
ERR 9-0	Membrane Switch "START" Key Short	1) Change Membrane Switch 2) Change Main Board
ERR 9-1	Membrane Switch "STOP" Key Short	1) Change Membrane Switch 2) Change Main Board

PANZITTA SALES & SERVICE
72 George Avenue
Wilkes-Barre, PA 18705
570-822-6720 800-822-6720
www.panzittasales.com

MOST PARTS FOR THIS MACHINE ARE NO NO LONGER AVAILABLE.