

**FORWARD MODEL 12000LA / LF / AR
FOUR POST DRIVE ON LIFT, 12000 LB CAPACITY
INSTALLATION AND OPERATOR'S MANUAL**

6.7.2000
IMAN 991002

IMPORTANT NOTICE:

THE FLOOR IN WHICH THIS LIFT IS TO BE INSTALLED MUST BE 4 INCH MINIMUM THICKNESS CONCRETE, WITH A MINIMUM COMPRESSIVE STRENGTH OF 3000 PSI, AND REINFORCED WITH STEEL MESH OR BAR PER COMMERCIAL PRACTICE. PADS MUST BE TWO FEET BY TWO FEET BY ONE FOOT THICK, REINFORCED WITH STEEL PER COMMERCIAL PRACTICE.

FAILURE BY THE PURCHASER TO PROVIDE THE RECOMMENDED MOUNTING SURFACE COULD RESULT IN UNSATISFACTORY LIFT PERFORMANCE, PROPERTY DAMAGE, OR PERSONAL INJURY.

IMPORTANT:

READ THIS INSTRUCTION MANUAL BEFORE INSTALLING THE LIFT.

READ THE ANCHOR BOLT INSTRUCTION PAGE BEFORE DRILLING AND INSTALLING THE CONCRETE ANCHOR BOLTS.

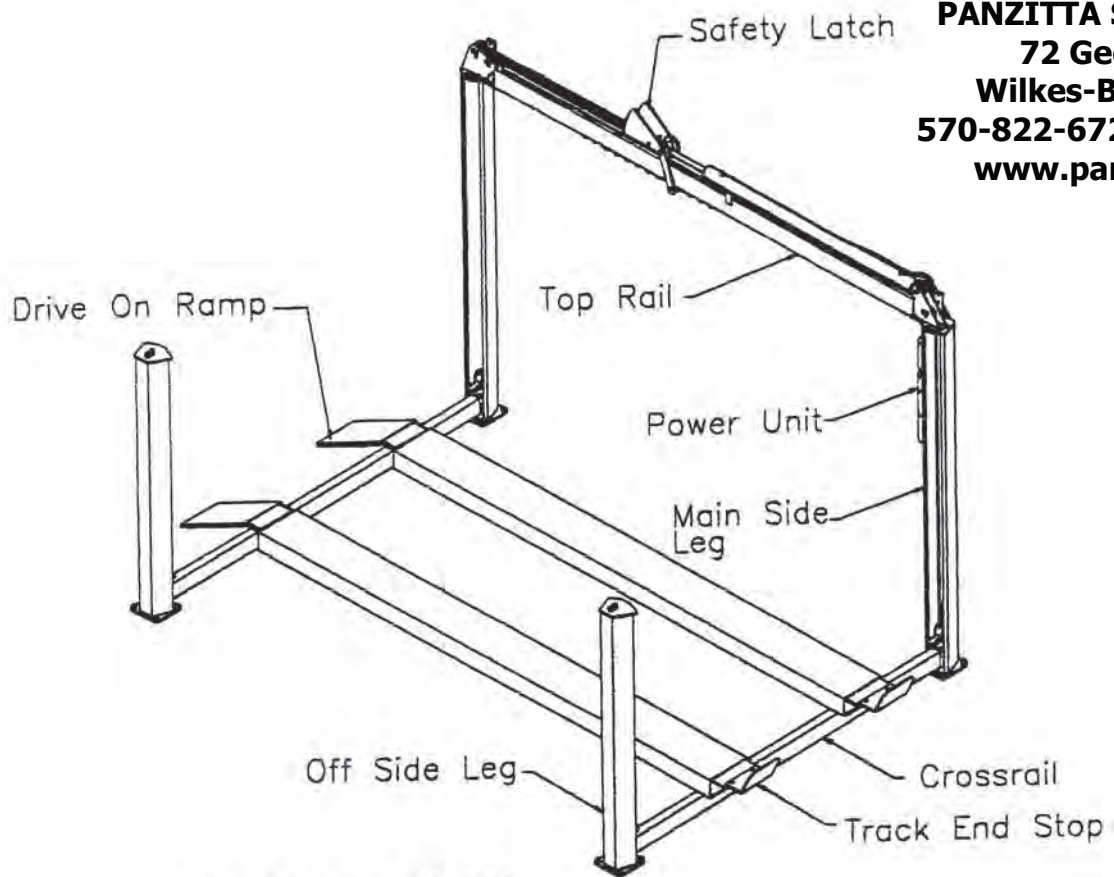
DO NOT RAISE A VEHICLE ON THE LIFT UNTIL THE LIFT HAS BEEN CORRECTLY INSTALLED AND ADJUSTED AS DESCRIBED IN THIS MANUAL.

REFER TO FIGURE 1, GENERAL ARRANGEMENT. THE LIFT IS TO BE INSTALLED WITH THE TOP RAIL ON THE PASSENGER SIDE AS SHOWN. THE STANDARD MOUNTING POSITIONS FOR THE POWER UNIT IS ALSO SHOWN. IF IT IS NECESSARY TO MOUNT THE POWER UNIT IN ANOTHER POSITION, THE INSTALLER MUST REROUTE THE HYDRAULIC LINES TO THE PUMP. THE INSTALLER MUST USE 3/8 DIAMETER HYDRAULIC HOSE OR STAINLESS STEEL TUBING WITH A RATED WORKING PRESSURE OF 2500 PSI AND A RECOMMENDED RATED BURST PRESSURE OF 6000 PSI. THE ROUTING OF THE HYDRAULIC LINES SHOULD CLEAR THE SAFETY LATCH MECHANISM OF THE TOP RAIL.

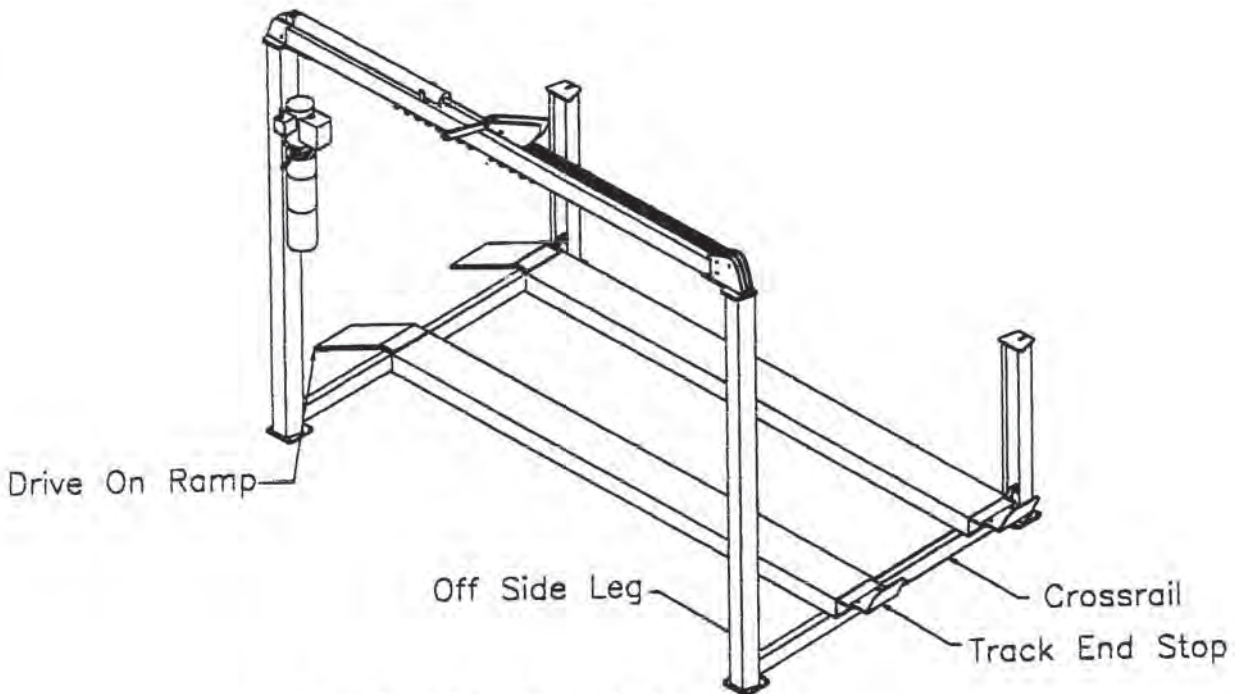
IMPORTANT NOTICE:

NEVER USE THIS LIFT TO RAISE JUST ONE END OF ANY VEHICLE. PROPERTY DAMAGE OR PERSONAL INJURY COULD RESULT.

**PANZITTA SALES & SERVICE
72 George Avenue
Wilkes-Barre, PA 18705
570-822-6720 800-822-6720
www.panzittasales.com**

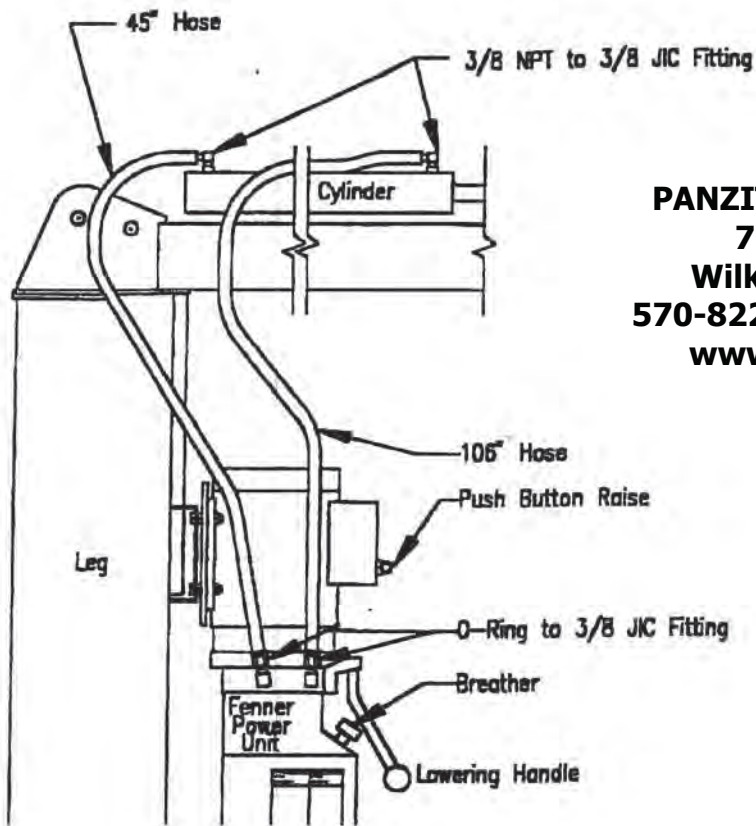


Top Rail On Left Side



Top Rail On Right Side

Figure 1. General Arrangement



PANZITTA SALES & SERVICE
 72 George Avenue
 Wilkes-Barre, PA 18705
 570-822-6720 800-822-6720
 www.panzittasales.com

FIGURE 10. FENNER POWER UNIT WITH (2) HOSE CONNECTIONS.

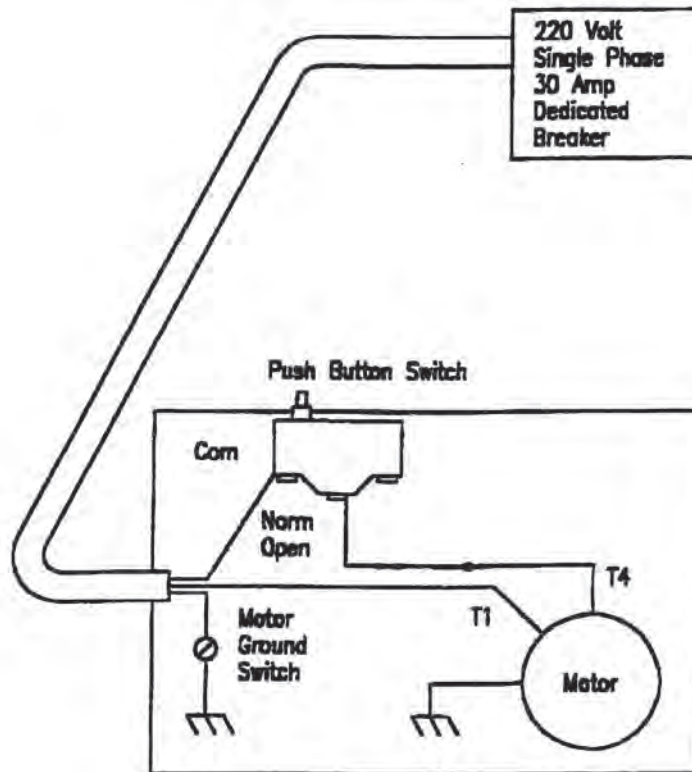
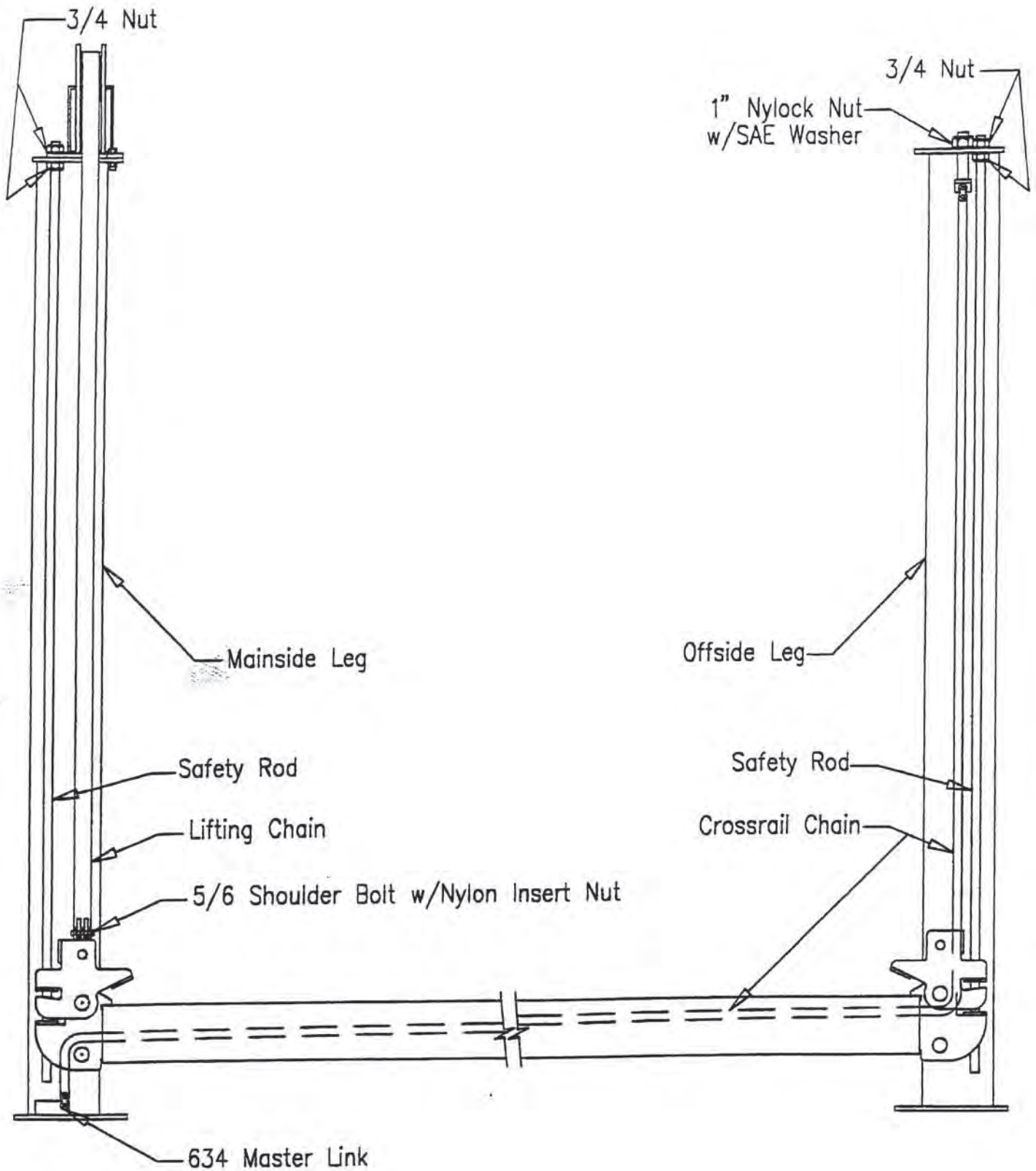


FIGURE 11. WIRING DIAGRAM: FENNER POWER UNIT



PANZITTA SALES & SERVICE
72 George Avenue
Wilkes-Barre, PA 18705
570-822-6720 800-822-6720
www.panzittasales.com

Figure 6. 12000 lb. Lift, Crossrail Chain Arrangement

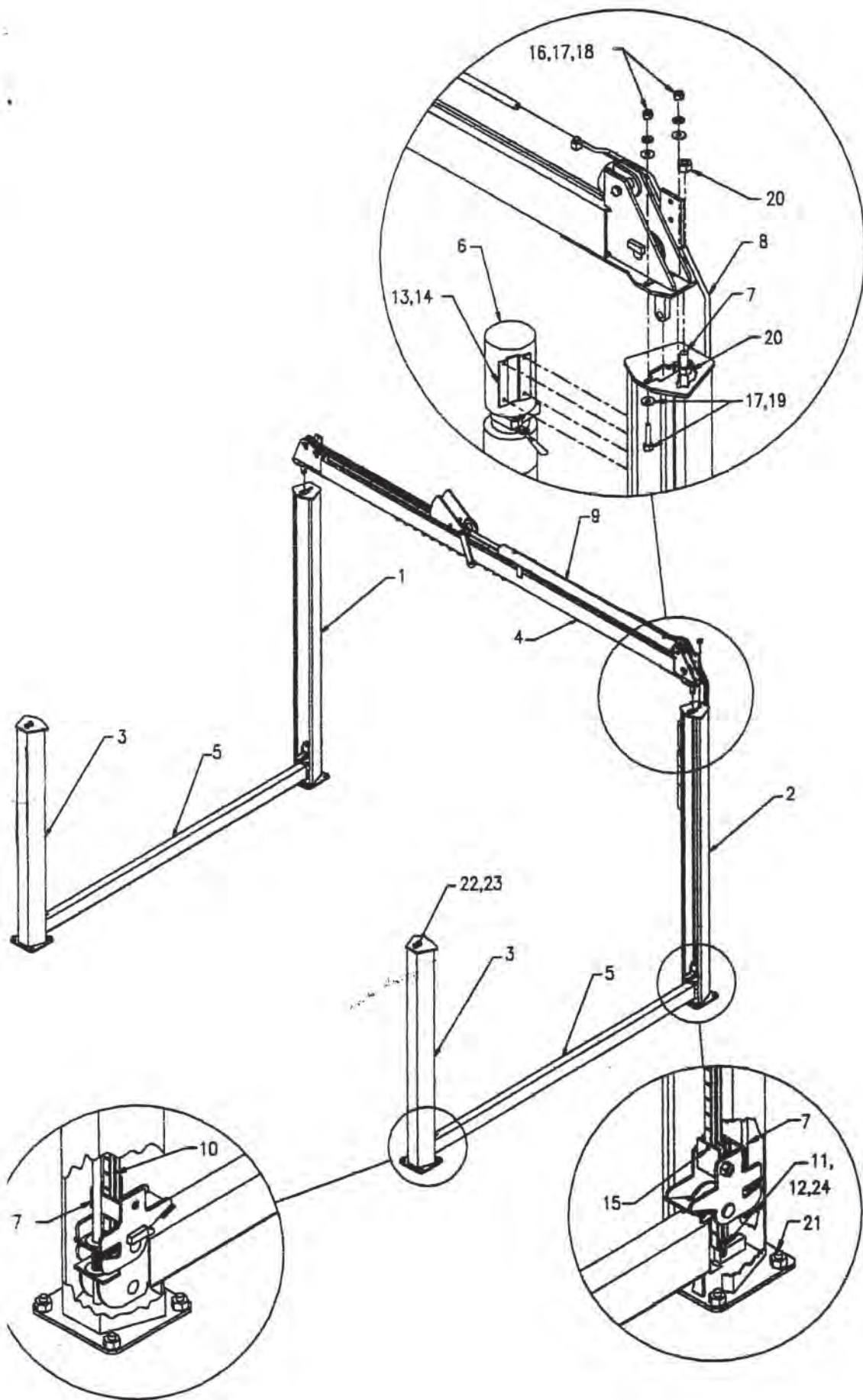


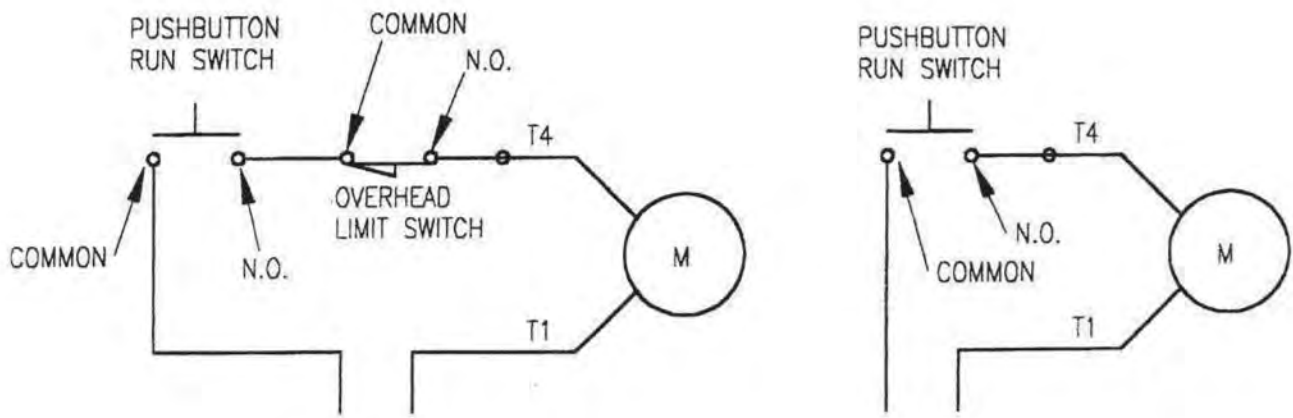
Figure 17. Exploded View
Page 22

PANZITTA SALES & SERVICE
72 George Avenue
Wilkes-Barre, PA 18705
570-822-6720 800-822-6720
www.panzittasales.com

**4-POST LIFT
EXPLODED VIEW PARTS LIST**

ITEM	PART NO.	REV	NAME / DESCRIPTION	RQD.
1	120101	C	M/S Leg Weldment	1
2	120102	C	M/S Leg Weldment W/ Power Unit Mntg.	1
3	120201	B	O/S Leg Weldment	2
4	121300	D	T/R Assembly	1
5	121400	C	X-Rail Assembly	2
6	992028	-	Power Unit, Fenner 1174, 4 - Post	1
7	995210	-	Safty Rod	4
8	992169	-	Hose, 3/8 x 45" High Pressure	1
9	992103	-	Hose, 3/8 x 106" High Pressure	1
10	992612	-	Chain, X-Rail	2
11	914805	-	1-1/8 Flat Washer	2
12	991072	-	BL 634 Master Link	2
13	911701	-	5/16 NC Nut	6
14	911741	-	5/16 x 1 Hx. Hd. Bolt, Power Unit Mounting	4
15	911841	-	5/16 x 1-1/2 Shoulder Bolt, Lifting Chain	2
16	912601	-	1/2 NC Nut	8
17	912605	-	1/2 Flat Washer	16
18	912607	-	1/2 Lock Washer	8
19	912771	-	1/2 x 1-3/4 NC Hx. Hd. Bolt, Gr. 8, T/R Mnt.	8
20	913601	-	3/4 NC Nut, Safty Rod	8
21	913798	-	3/4 x 4-3/4 Anchor Bolt w/ Nut, Washer	16
22	914404	-	1-14 Nyloc Nut	2
23	914406	-	1" SAE Flat Washer	2
24	914804	-	1-1/8 NF Nylon Insert Nut, Chain Anchor Stud	2

PANZITTA SALES & SERVICE
72 George Avenue
Wilkes-Barre, PA 18705
570-822-6720 800-822-6720
www.panzittasales.com



TWO POST LIFTS WITH OVERHEAD SAFETY SWITCH

FOUR POST AND TWO POST BASE PLATE LIFTS

FIGURE 11. FENNER POWER UNIT ELECTRICAL DIAGRAMS

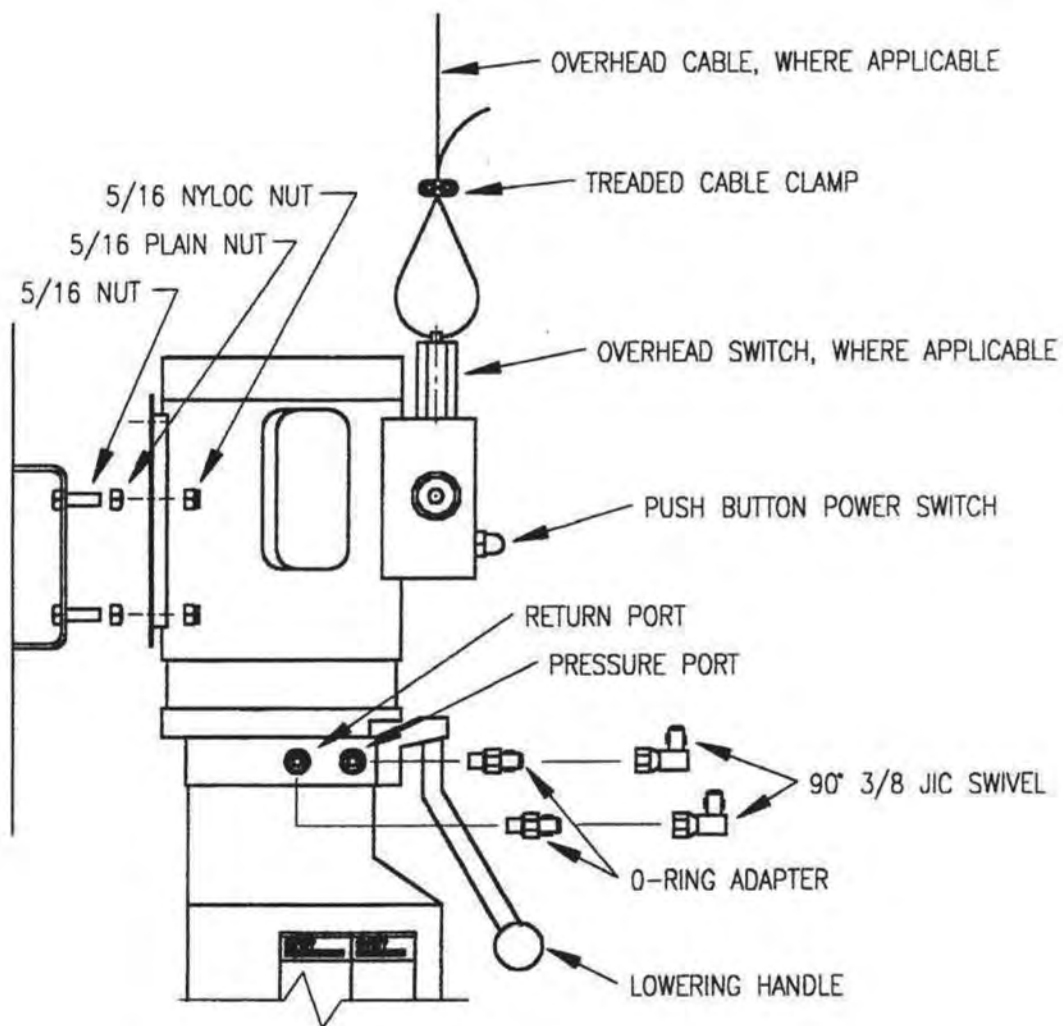


FIGURE 12. FENNER POWER UNIT INSTALLATION

5. OIL LEAKS.

1. Power Unit: If the power unit leaks hydraulic oil around the tank mounting flange, check the oil level in the tank. The level should be two inches below the flange of the tank. Check by removing the bleed screw just below the top of the tank.
2. Cylinder: Some seepage from the rod end of the cylinder is normal. Oil in minute quantities adheres to the rod when the lift is lowered. The oil is removed by the rod wiper when the lift is raised. This oil will drip down and collect on the top rail. To check for a leak condition, raise the lift until the cylinder bottoms out. Hold the power unit run button for one minute. The system pressure at this time will be the maximum and the cylinder will leak if the seals are bad.

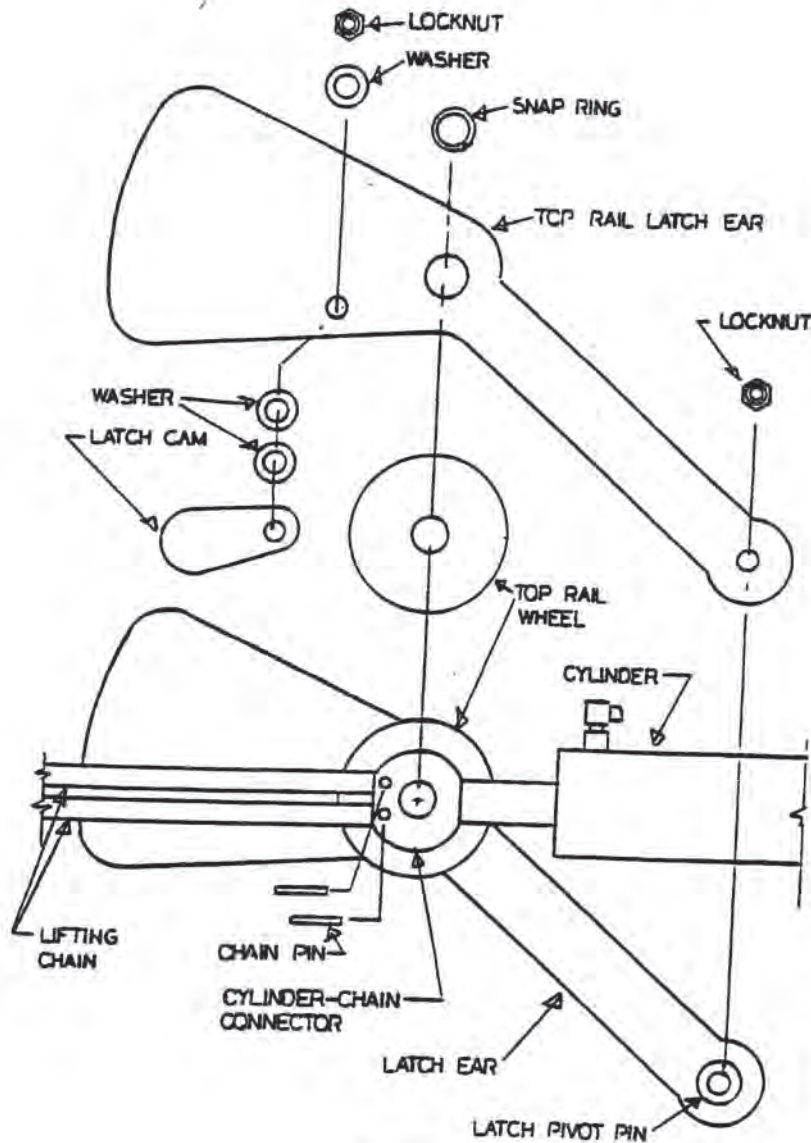


FIGURE 16
TOP RAIL SAFETY LATCH

PANZITTA SALES & SERVICE
72 George Avenue
Wilkes-Barre, PA 18705
570-822-6720 800-822-6720
www.panzittasales.com